

# Scaffold Hire Service



ENGINEERED FROM THE GROUND UP.

- Quality workmanship
- Expert advice
- Experienced team
- Peace of mind



**Complete scaffolding  
and access solutions.**

**Anywhere, anytime,  
mobiles, fixed or  
custom.**

*The full range of QuickAlly scaffolding is available for hire in Brisbane, Sydney & Melbourne. Our scaffolding experts can design, deliver and build the scaffolding for your project, or you can come in and collect what you need from our branches.*

*At QuickAlly no project is too big or small for our dedicated team of professionals. We pride ourselves on providing cost effective, quality solutions for any project and our staff draw on years of industry experience to deliver on time every time assuring you of productivity and safety for your staff, contractors and clients.*

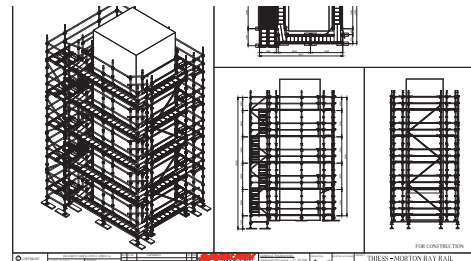
## Industry Experience



QuickAlly has experience in design and installation of scaffolds & access platforms in all types of industries and environments.

QuickAlly supply hire scaffold to all sectors of the construction & mining industries, major infrastructure projects, food & beverage manufacturing and many more.

## Detailed Drawings



QuickAlly can provide fully detailed engineered drawings coupled with comprehensive quotes. Once on site our installers and project managers will always keep you up to date with the progress of the construction of your scaffolding at all times.

We provide detailed documentation prior to commencement with a handover certificate upon completion of all scaffolds.

## Standards Compliance

QuickAlly Scaffolding is manufactured to the highest standards of industry compliance\* and individually quality controlled and tested to ensure maximum safety, stability & durability.

\* Standard AS/NZS 1576.1:2010

## Trained Staff



QuickAlly installers are fully qualified and trained in best practice to ensure all installations of QuickAlly scaffolding meet WorkCover regulations, AS/NZS 1576.1 and the Scaffolding Code of Practice 2009.

QuickAlly are active members of the Scaffolding Association Queensland and proactively contribute improvements and apply any recommendations to our work ensuring we are market leaders in safety and improvement.

## Transport



QuickAlly offer transport solutions for large and small projects providing detailed pricing within our quotes to ensure a timely and cost effective delivery to your project.

Our company and sub-contract drivers are qualified, holding relevant licences for safe operation of vehicles, forklifts and vehicle loading cranes.

## Australian Made



QuickAlly scaffolding is 100% Australian owned company. All our products are designed, tested, manufactured and distributed from our Brisbane factory. QuickAlly scaffolding products are made to endure the demands of the Australian climate and high cycle use required on today's construction sites.

Our hire scaffold is designed in-house & engineered by our expert fabrication team, offering unsurpassed flexibility to safely construct scaffolding.



# Scaffold Hire

Complete scaffolding and access solutions



## WHY HIRE?

- No large capital outlay for scaffolding equipment
- No post-project storage requirements
- Expert on site advice and cost effective solutions

## WHY QUICK ALLY?

- Australian made
- Experienced staff
- Australian Standards compliant equipment
- Engineering drawings & documentation available on request
- Experience hiring to a broad range of industries
- Obligation free on-site quote and advice



## SYSTEMS



## MOBILES



## CUSTOM



## EDGE PROTECTION



**13 25 59**

[quickally.com.au](http://quickally.com.au)

### Brisbane

876 Kingsford Smith Dr,  
Eagle Farm QLD 4009  
Fax: 07 3877 2285  
E: [sales@quickally.com.au](mailto:sales@quickally.com.au)

### Sydney

26 Long Street  
Smithfield NSW 2164  
Fax: 02 9732 2489  
E: [syd\\_hire@quickally.com.au](mailto:syd_hire@quickally.com.au)

### Melbourne

217 Rex Road  
Campbellfield VIC 3061  
Fax: 03 9219 2079  
E: [sales@quickally.com.au](mailto:sales@quickally.com.au)

GJQA21112008QUICKALLY\_HIRE.INDD